

2022

---



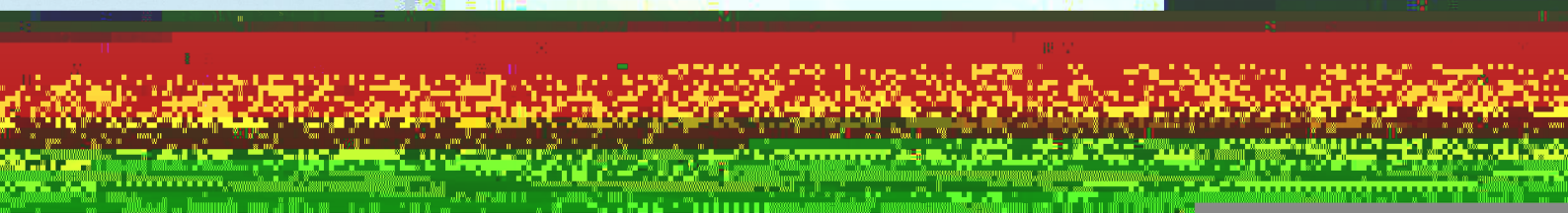
## Contents

	.....	03
	.....	04
1.	.....	05
2.	.....	05
3.	.....	06
4.	.....	07
5.	.....	08
6.	.....	08
	.....	09
1.	.....	10
2.	.....	12
3.	.....	17
4.	.....	18
5.	.....	20
6.	.....	22
	.....	25
1.	.....	26
2.	.....	28
3.	.....	29
4.	.....	29
5.	.....	33
6.	.....	34
	.....	38
1.	.....	39
2.	.....	42
3.	.....	43
4.	.....	44
5.	.....	45
	.....	46



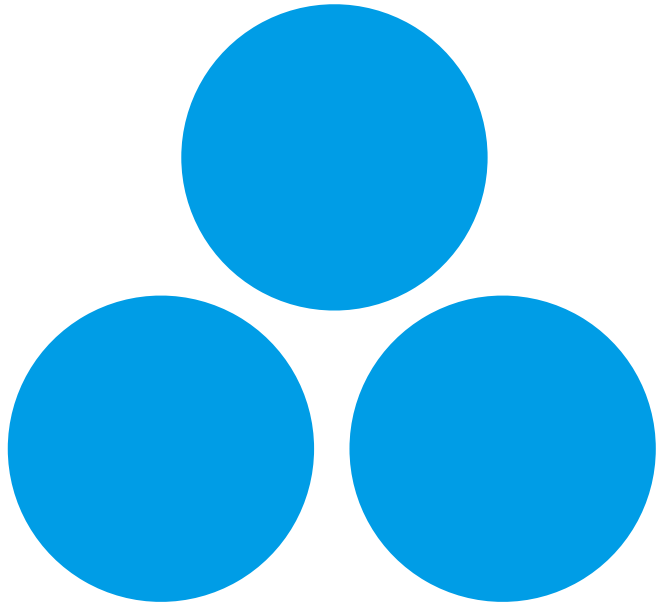


# About Honz





# 3



- 29
- 500
- 
- 100
- 200
- 23
- 5
- 51
- 1000
- 4



2007

2008

2009

2010

2011

2012

2013

500

2014

2015

2016

2017

2018

2019

2020

2021

"

"

50

ESG

TOP100

2022

31

2022

44

2021

2022

2022

2022

2022

" "

2021

2022

-

2022

2022

"

"

2022

2022

"

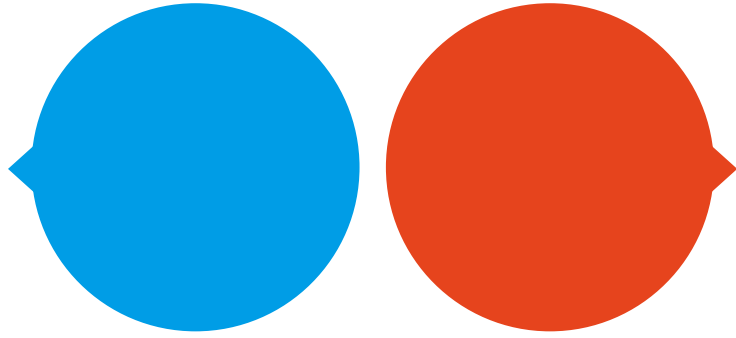
"

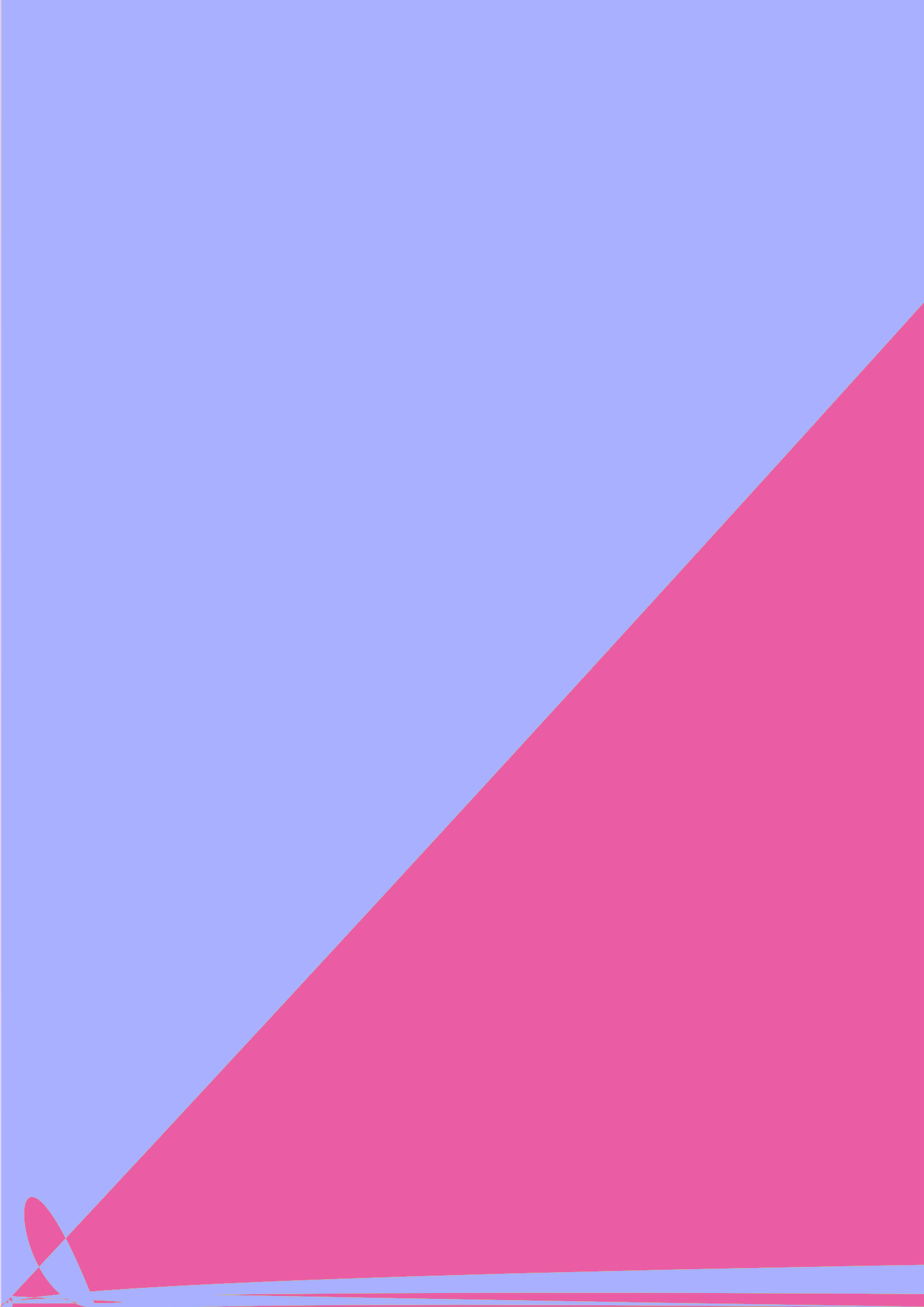
2022

"

"









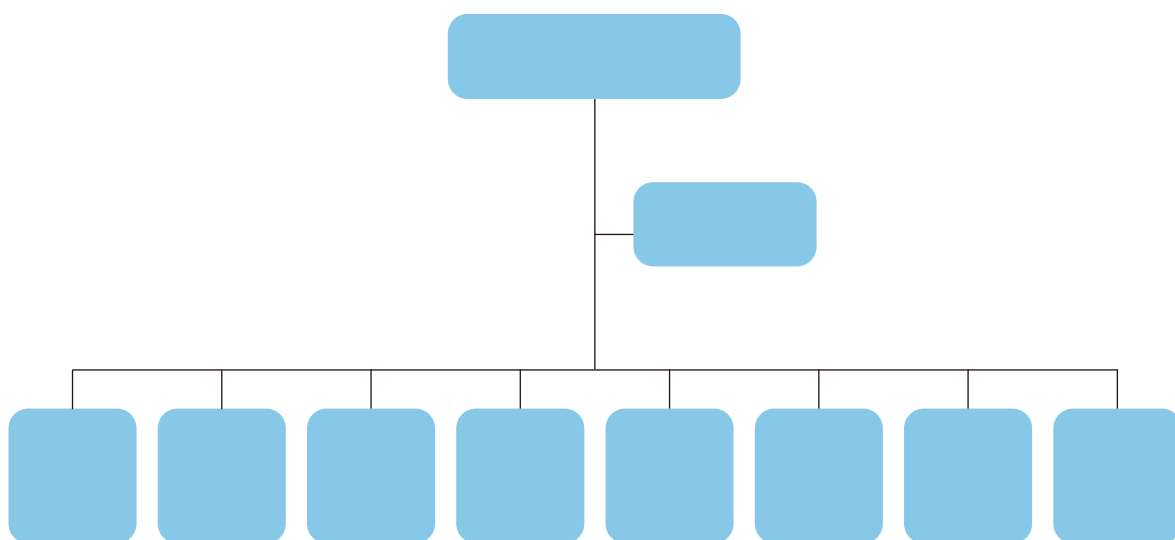
# Introduction Of The Management System For Environment





# 中山爱护日用品有限公司

ZHONGSHAN CAREFOR DAILY NECESSITIES.



## Description Of Pollution

		16259.74	
	/	0.92	
COD		0.713	
		0.025	

		3840000	
		0.211	
		0.0196	
		0.0097	

		27.93	
	/	0.00158	

COD		0.06327	
		0.00445	
		0.245430	
		0.003	
		1303	
		455.373	
		0.1139	

		2358	
SO <sub>2</sub>		0	
NOx		0.062	

		2222	
CODcr		0.0438	
NH <sub>3</sub> -N		0.000249	

		14.5	
		1	



		650	
	/	0.65	
COD		0.0500	
		0.0015	

		156.98	
		0.1600	
		0.0100	
		0.0025	

		0.2	
	/	0.0002	

## The Usage Of Resources And Energy

		1844660
		13.308
		388.309
	/	0.0220
		63937
	/	3.619

		993220
	/	221.83
		60.8974
	/	136.01
		26950

		1261290
		19835
		34181

		2516	
		52644	
		326.7	

		241824
	/	238.35
		5.19
	/	51.16
95#		192.16
98#		37.85
		4325
	/	4.26

Greenhouse Gas Emissions And Measures To Address Climate Change

		250.327
		1448.058
		1698.385
	/	0.096

		40169
	g/L	1.97

■

■



## Energy Conservation Measures And Use Of Clean Energy

- 

- 

- 

-

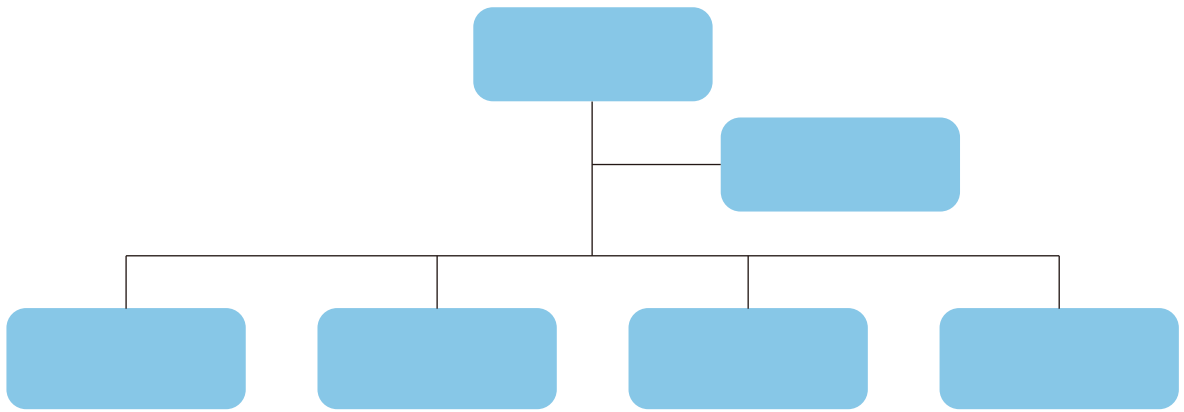


## Construction Of Emergency Management System



■

■



[Dark Blue Header Bar]								
[Blue Cell]	[Blue Cell]	[Blue Cell]	[Blue Cell]					[Blue Cell]
			[Blue Cell]	[Blue Cell]	[Blue Cell]	[Blue Cell]	[Blue Cell]	
1			✓	✓		✓	✓	
2			✓	✓		✓	✓	
3			✓		✓		✓	
4		/	✓	✓				
5		/	✓	✓	✓	✓	✓	

1			20	
2			2	
3			15	
4			60	
5			600	
6			5	
7			2	
8			4	
9				
10				
11				
12			1	
13			1	
14			4	
15			20	
16			64	
17			64	
18			64	
19			140	
20			185	

Product-Oriented, Employee-Based





# Product safety And Responsibilities





# Employee Health And Safety Production





Privacy And Information Security



Protection Of Employees' Rights

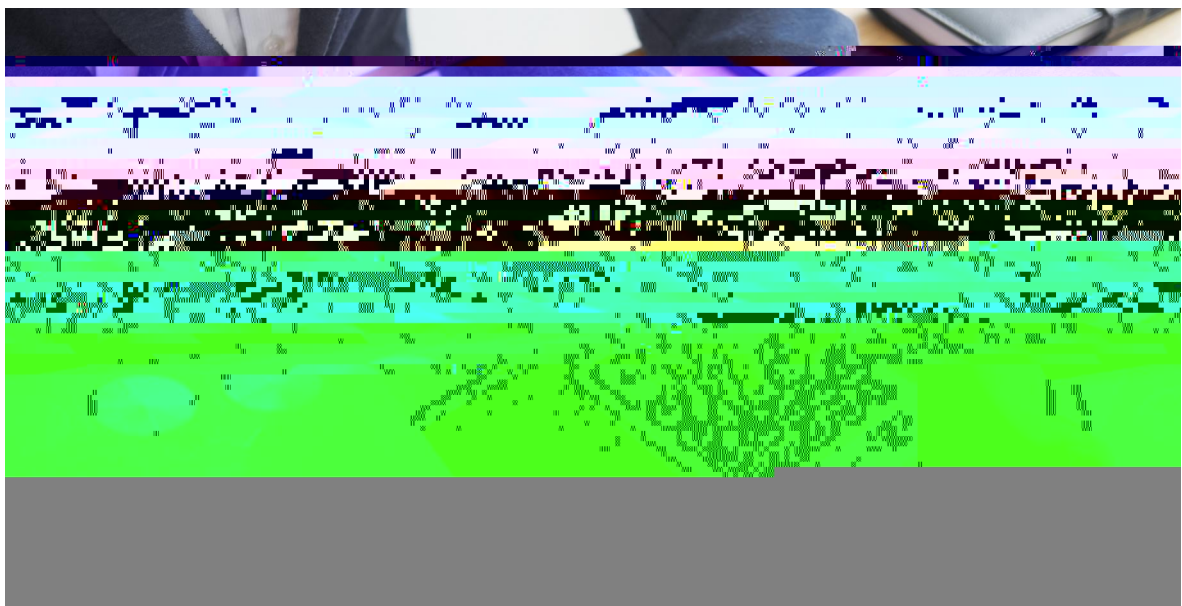
■

■









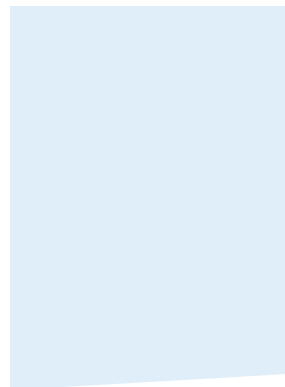


Public Charity



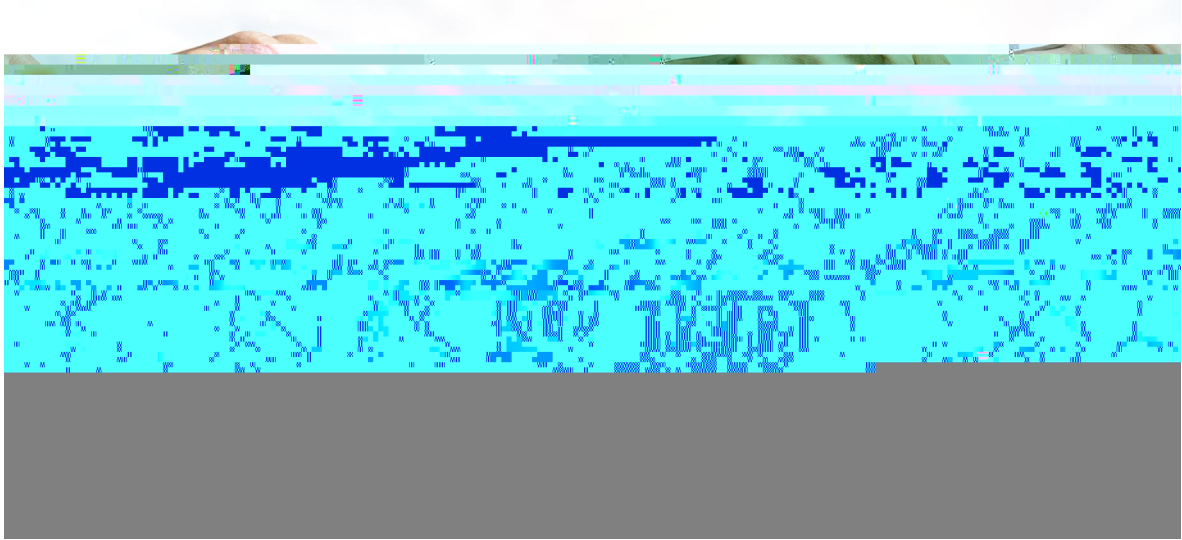
■







Board Of Directors







Jointly Built By The Party And Trade Unions





# Investor Relations Management





# Uphold the Rights And Interests Of Shareholders



# Guarantee The Rights Of Shareholders To Participate In Company's Decision- marking




# 2023

Commitment Of Responsibility For 2023

