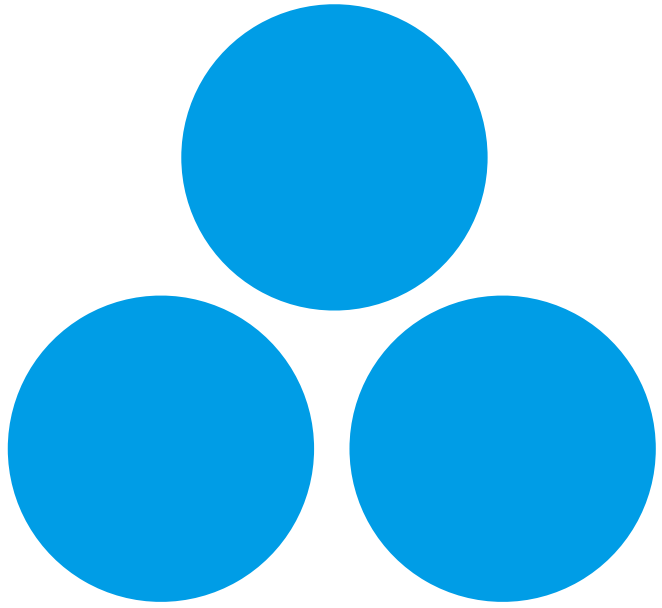
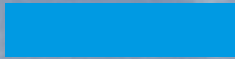


	03
	04
1.	05
2.	05
3.	06
4.	07
5.	08
6.	08
	09
1.	10
2.	12
3.	17
4.	18
5.	20
6.	22
	25
1.	26
2.	28
3.	29
4.	29
5.	33
6.	34
	38
1.	39
2.	42
3.	43
4.	44
5.	45
	46







2007

2008

2009

2010

2011

2012

2013

500

2014

2015

2016

2017

2018

2019

2020

2021

"

"

50

ESG

TOP100



2022

31

2022

44

2021

2022

2022

2022

2022

" "

2021

2022

-

2022

2022

"

"

2022

2022

"

"

2022

"

"



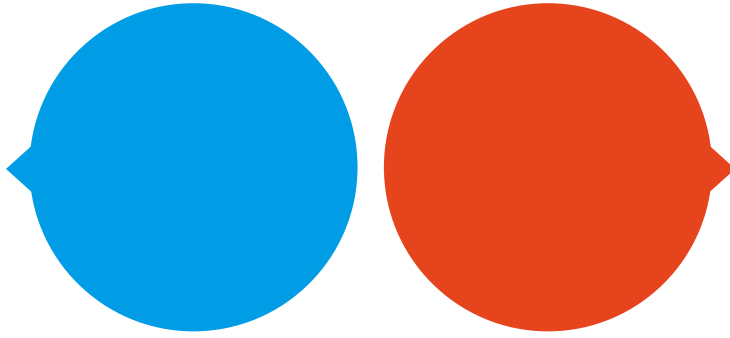
第十一届
海南省优秀企业
(2020-2021年度)

海南省企业联合会
海南省企业家协会
二〇二一年六月



2022年度
海南省优秀企业
康芝药业

" " " "



ESG ESG

ESG ESG

ESG ESG

ESG

ESG

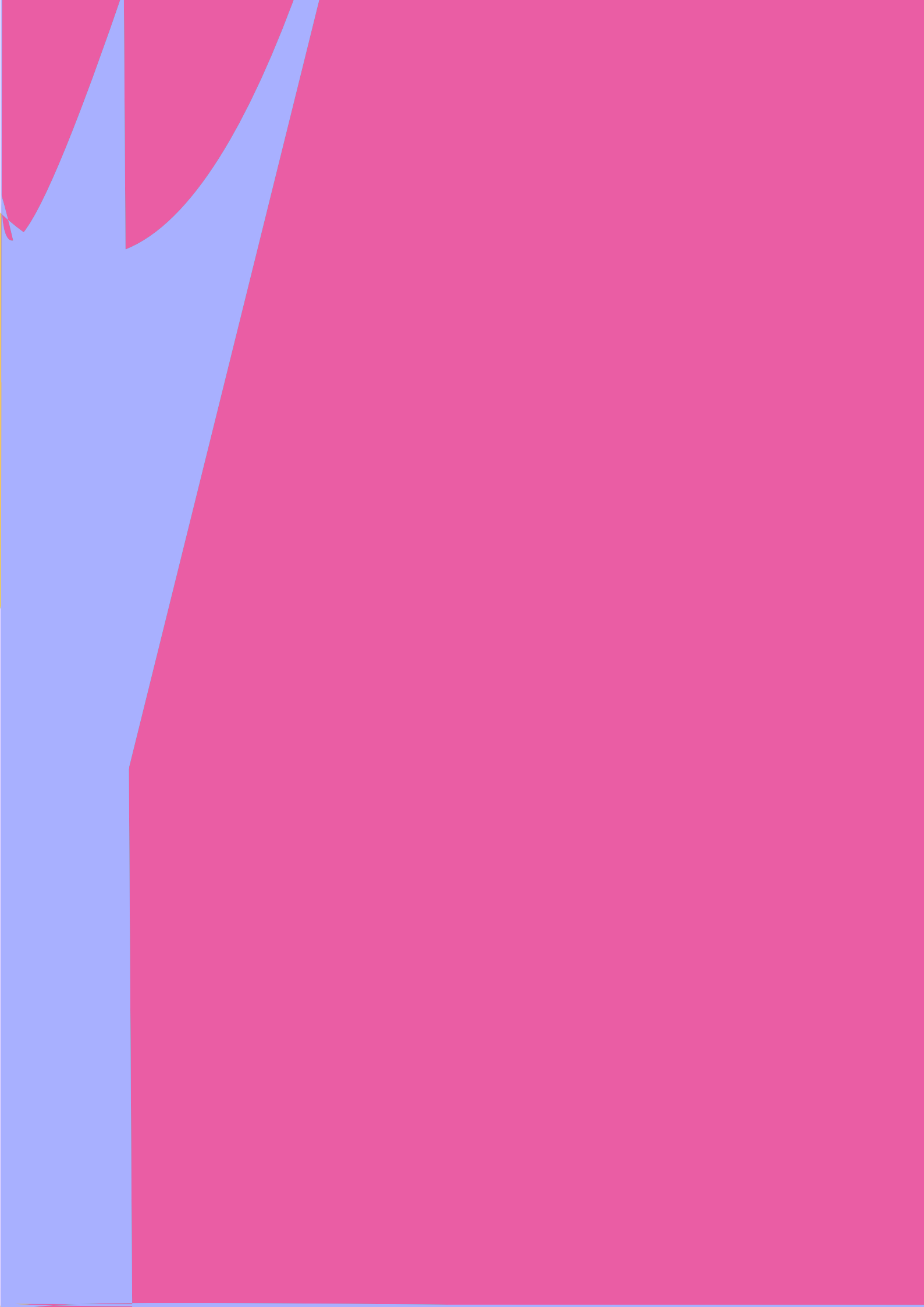
ESG

ESG

ESG

ESG







1

1

2

3

4

5

6



200 2022

16259.74

54.20

		16259.74	
	/	0.92	
COD		0.713	
		0.025	

2 /h

2022

		3840000	
		0.211	
		0.0196	
		0.0097	

2022

		27.93	
	/	0.00158	

COD		0.06327	
		0.00445	
		0.245430	
		0.003	
		1303	
		455.373	
		0.1139	

		2358	
SO ₂		0	
NOx		0.062	

		2222	
CODcr		0.0438	
NH ₃ -N		0.000249	

		14.5	
		1	



		1844660
		13.308
		388.309
	/	0.0220
		63937
	/	3.619

		2516	
		52644	
		326.7	

		241824
	/	238.35
		5.19
	/	51.16
95#		192.16
98#		37.85
		4325
	/	4.26



2

3

4

		250.327
		1448.058
		1698.385
	/	0.096

		40169
	g/L	1.97

■ 1646868 2022 1.06 / 1641.19 2022 1282310.62 2022 4 2022 1209727 2023 2021

■ 11.6 8.88 2023 2022



2022

- 1
- 2
- 3
- 4
- 5
- 6

LED

2022



2022

79.72%

2021



2022

2021

2022

0.2

2022

4.3

2



2022

2022



2022 4 2022 164.69 120.97
43.71



2022 2022 71.98
16.58 2021 11.64 2021 8.88
2022





"

"

(2021

)

"

"



2022

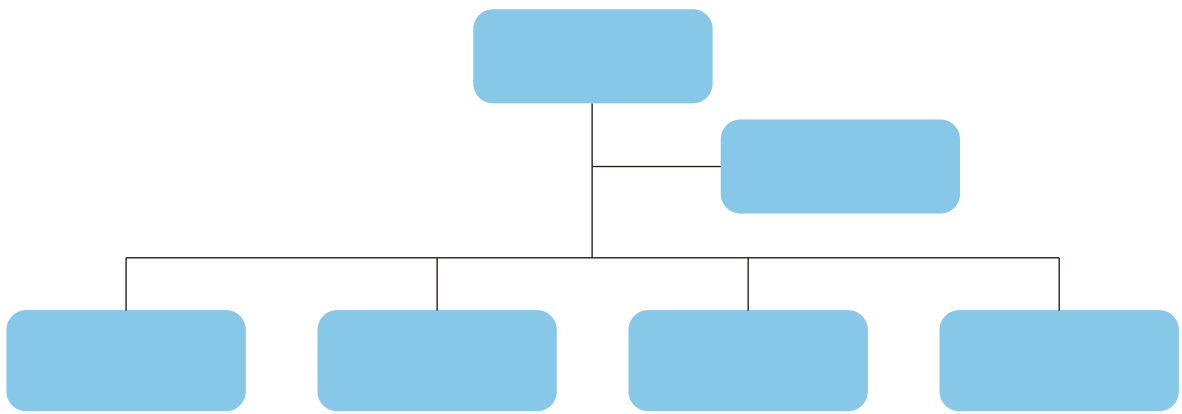


"

"

"

"



[Dark Blue Header Bar]								
[Blue Cell]	[Blue Cell]	[Blue Cell]	[Blue Cell]					[Blue Cell]
			[Blue Cell]	[Blue Cell]	[Blue Cell]	[Blue Cell]	[Blue Cell]	
1			✓	✓		✓	✓	
2			✓	✓		✓	✓	
3			✓		✓		✓	
4		/	✓	✓				
5		/	✓	✓	✓	✓	✓	

1			20	
2			2	
3			15	
4			60	
5			600	
6			5	
7			2	
8			4	
9				
10				
11				
12			1	
13			1	
14			4	
15			20	
16			64	
17			64	
18			64	
19			140	
20			185	





"

"

1

GMP

GMP ICH ISO ISPE WHO

OOS/OOT

GMP

2022

0.1g

0.1g

-

GMP

7 2022

34

10

100%

2022

2

1

2022 1 25

GMP

2022

8

4

100%

2

0898- 66802060

400- 8866- 126

3

5

ISO 22716

-

GMP

10

RO

ERP





“ ”



1

“ ”

2

“ ”

3

4

2022

2022

2013

2022



1

2

3

"

" "

" "

"

"

"

4

"

"



A B C D

C

D





2022

"

"

" 2022

"



2022

"

"

3

8

" "

2022



2011 9 23

" "

" "

2022

"

"

" "

“ ”

14

“ ”



19

“ ” “ ” “ ”

”

2 18

10

10

A

B

8 29

1412

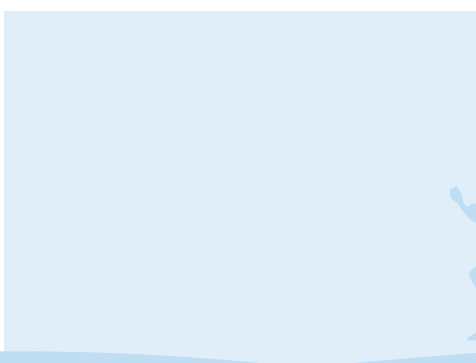
436

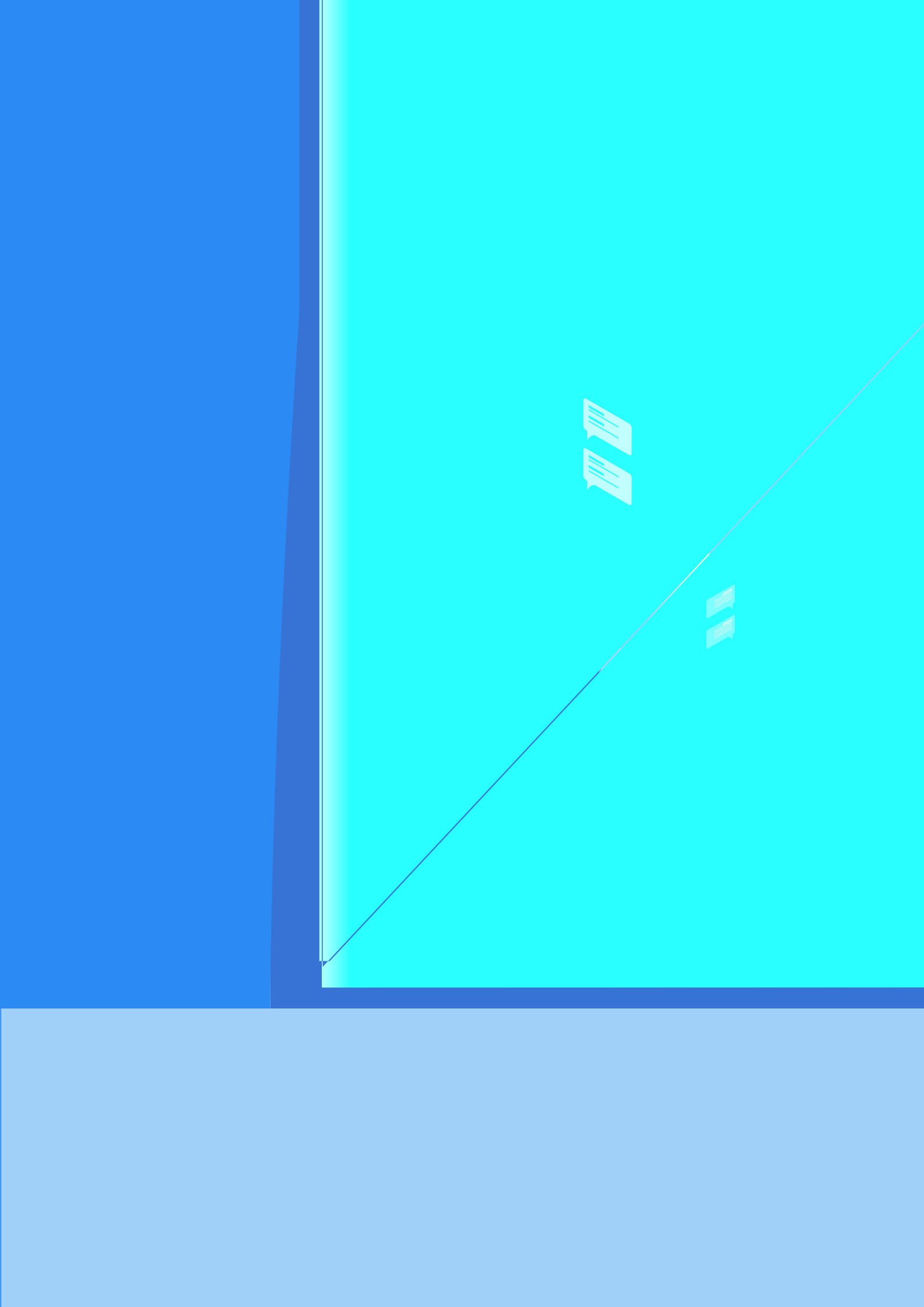
"

"

A

B







7

3

1/3

2 —

2 —

1

2022

" "

2

2021

2022

2022 12 31
5

21

"

"

2022

"

"



2010 6

21

260

100%

2013

2022

OA

"

"

"

"





2021

www.cninfo.com.cn

1.

2.

“ ”

3.



2022

88

135

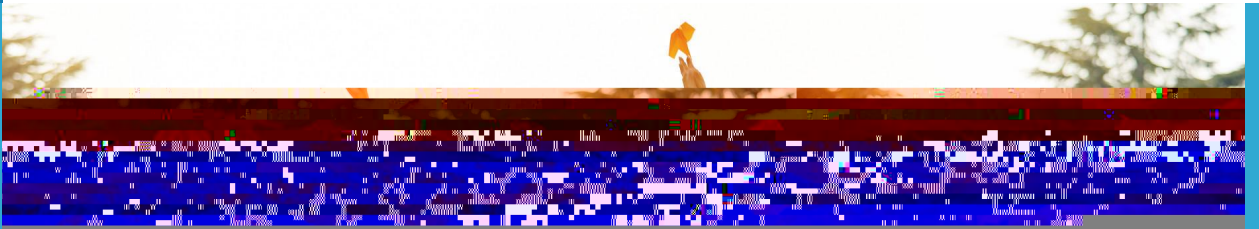


30%

"

"

2021	0	10,987,504.99	0
2020	9,000,000	9,339,252.11	96.37%
2019	0.00	- 26,462,980.18	0.00%



2022

"

"

2023

"

"

2023