



2018

contents

.....	03
.....	04
.....	08
.....	11
.....	13
.....	16
.....	18
.....	23

About This Report

2018

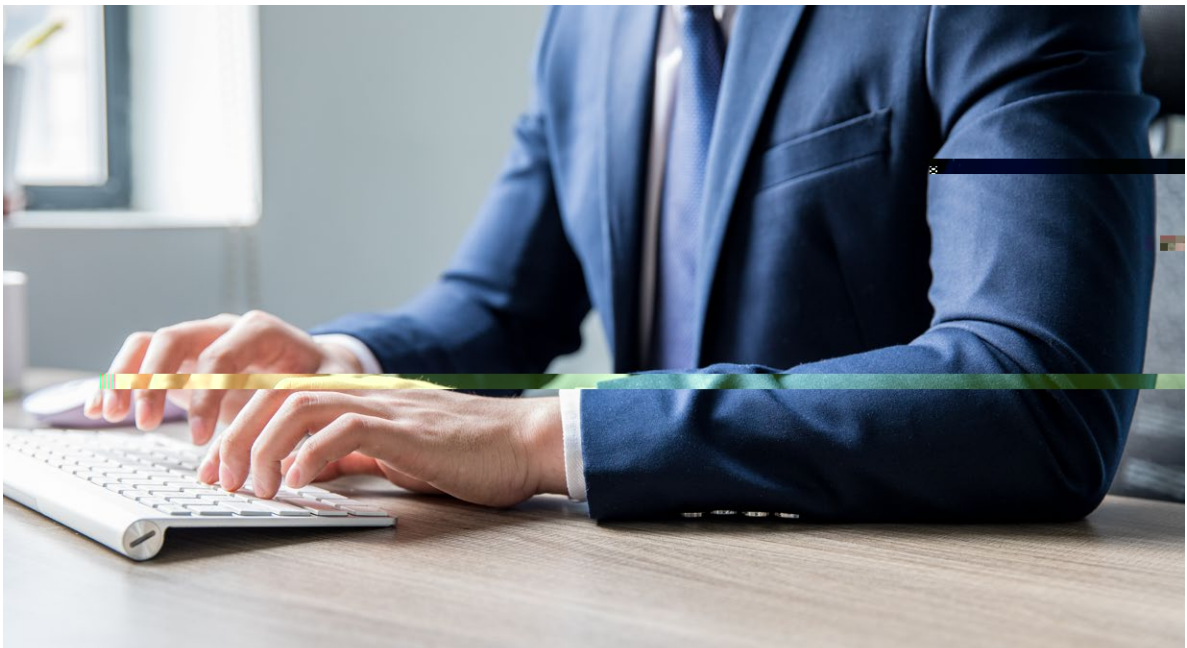
2018

2018 1 1 2018 12 31

GRI

www.honz.com.cn

www.cninfo.com.cn



500

1

4

2011





2018



3

26

500

100

200

26

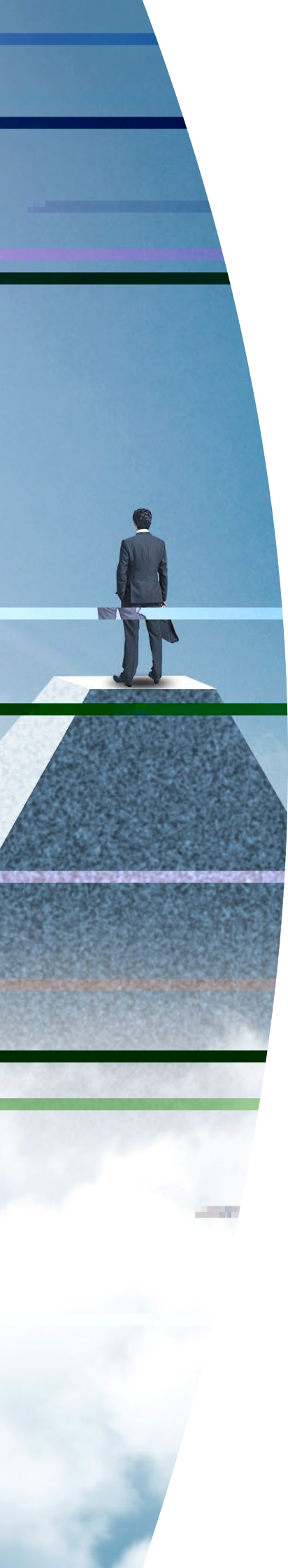
3

12

1000

4





2003

2011

2013

500

2014

2015

2016

2017



1

3

4

5

10

2018

11

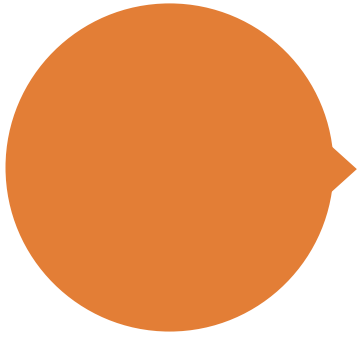
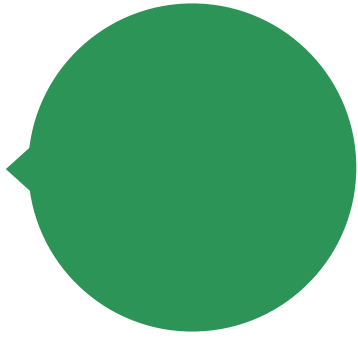
2018

2018

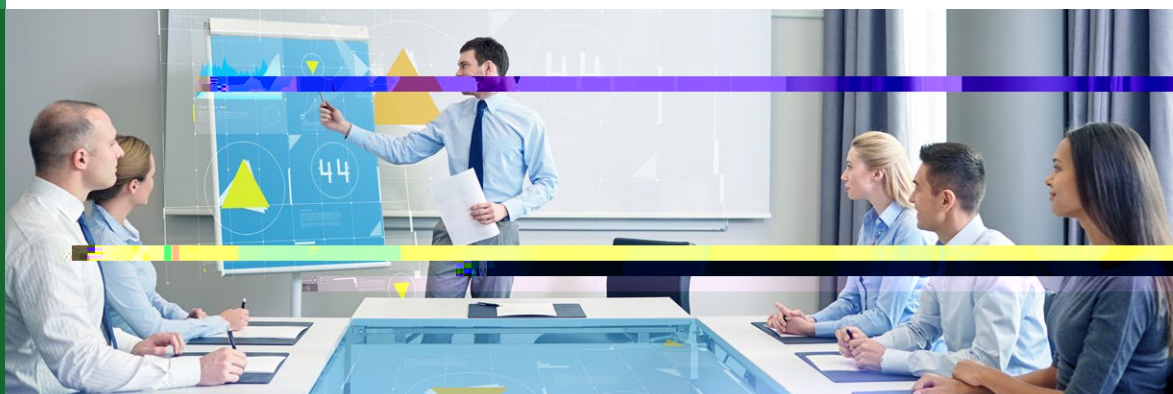
12

12





Shareholders' Equity And Returns



2018

www.cninfo.com.cn

1.

2.

3.



2018



2018

119

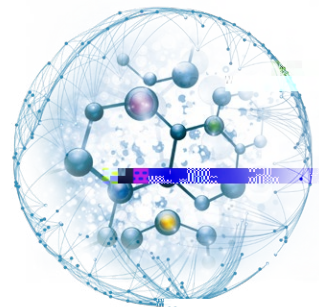


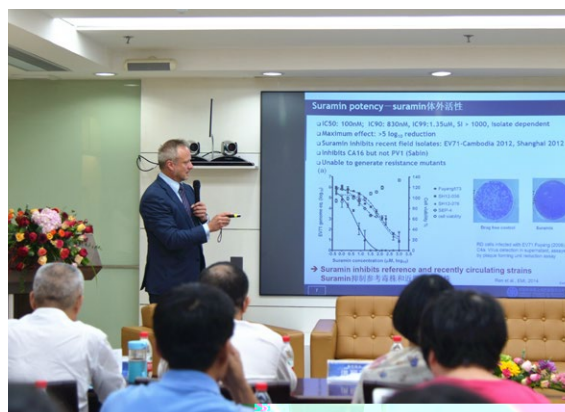
30%

2017	0.00	50,196,886.08	0.00%
2016	0.00	46,156,625.13	0.00%
2015	30,000,000.00	68,197,183.18	43.99%



2013





2018

PCT

2018

620

2018

1

SCI 3

2018

27%

T4 CFB

OEM

26

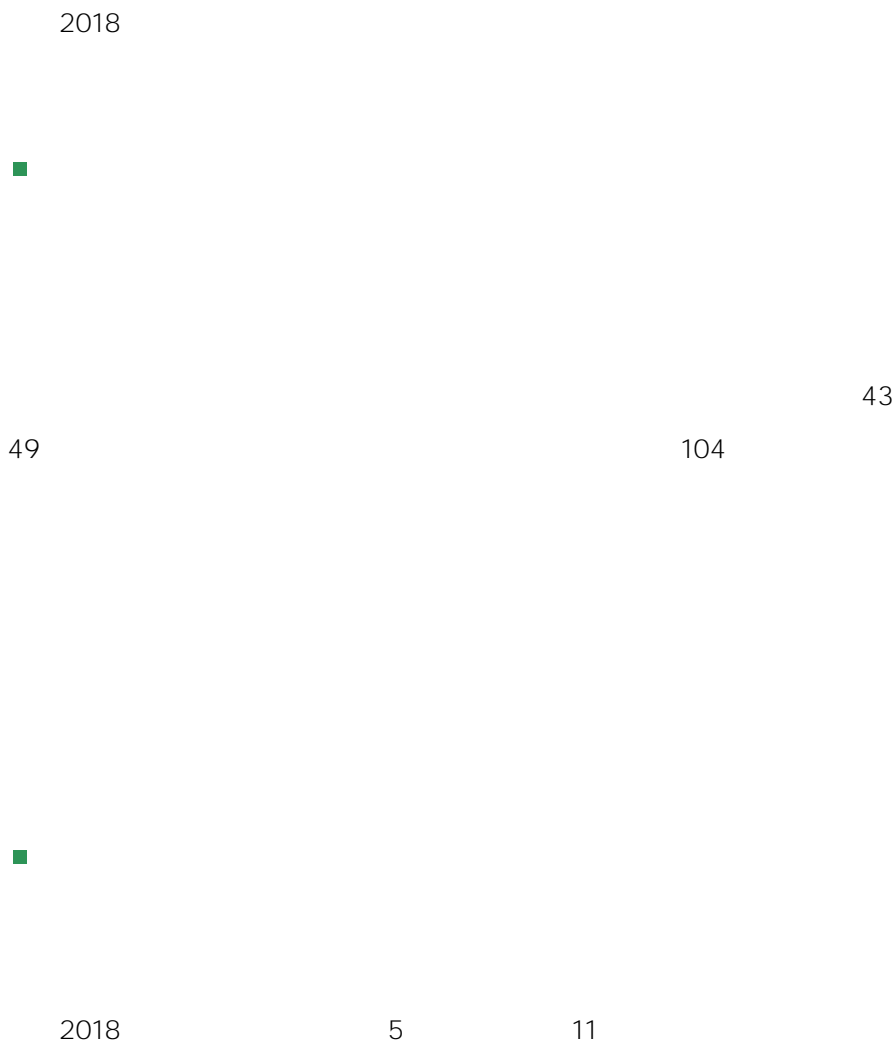
3

18

8

12

Safe Production and Low Carbon Operations



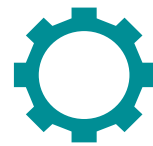


2018 12 8
 1 70 1 60 2018 11



2018

15 9





2018

PVC

PH

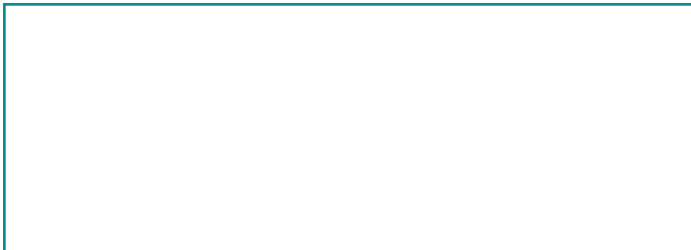
52



2018



Marketing And Customer Service

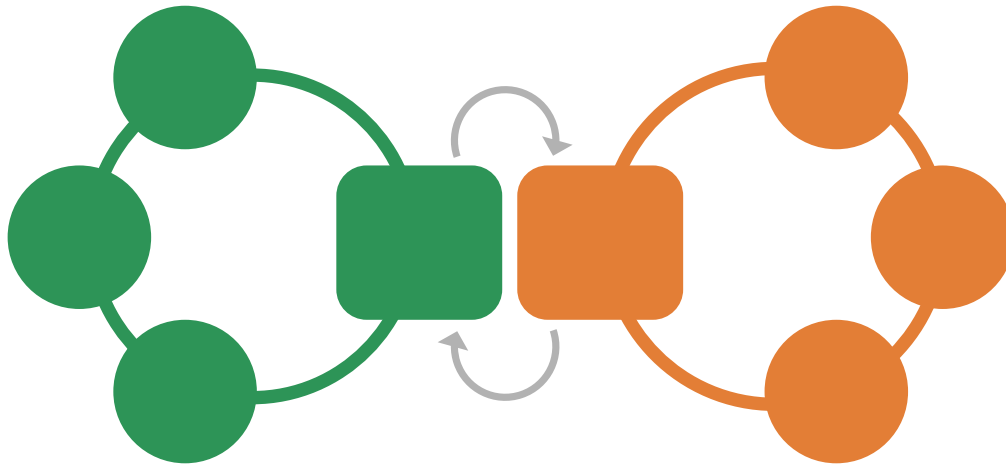


OTC VIP

2018 22 22

2018 6 7

9 11



2018

VIP

ERP

U8

NC

ERP



2018

SKU

PDCA

Talent Cultivation And Employee Care

■

■

2018

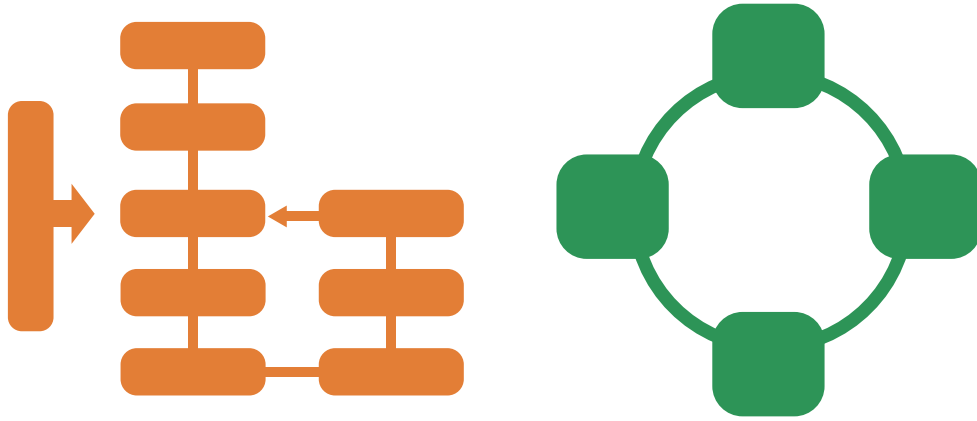




office



2018



1 2018

2 2018

3



2018

8



2018



2018



2018

VIP



Social Welfare and Children Care

2018



2011 9 23

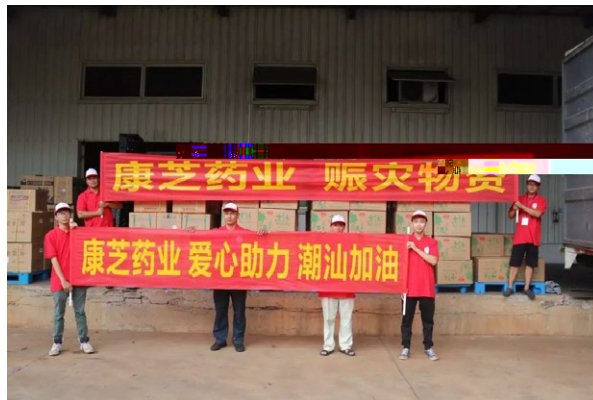


2018 1

9



2018 8



2018

123BABY



2018 8



2018 4
50 3 5 1 13

2018

60

5000

2019

Commitment Of Responsibility For 2019



2019

2019